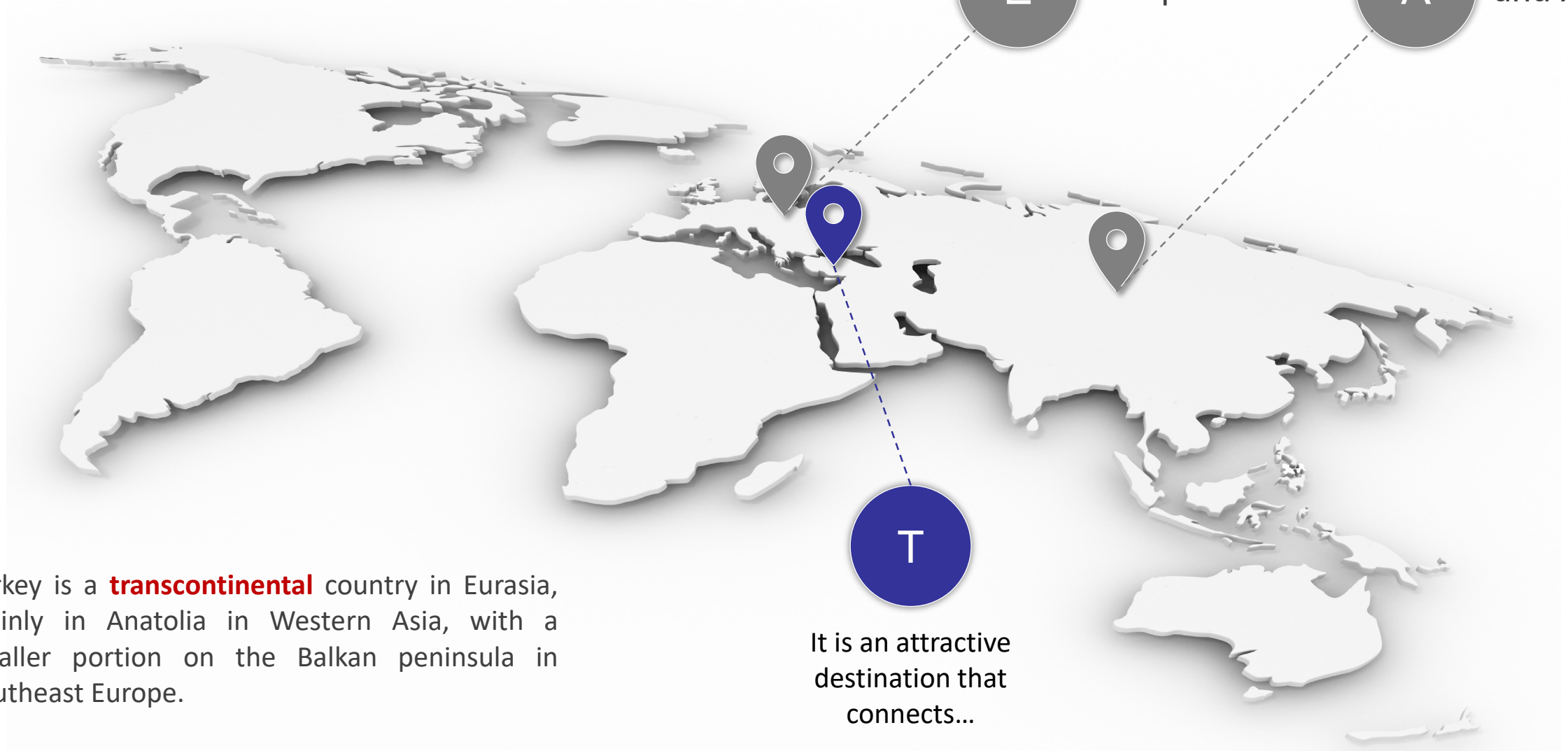




ORTA DOĞU TEKNİK ÜNİVERSİTESİ
MIDDLE EAST TECHNICAL UNIVERSITY



“Together, we can change the world”





ORTA DOĞU TEKNİK ÜNİVERSİTESİ
MIDDLE EAST TECHNICAL UNIVERSITY

METU @ A GLANCE

METU HAS 3 CAMPUSES



**MAIN CAMPUS
ANKARA**
(founded in 1956)

1



**ERDEMLİ CAMPUS
MERSİN**
(founded in 1975)

2



**NORTHERN CYPRUS
KALKANLI**
(founded in 2000)

3



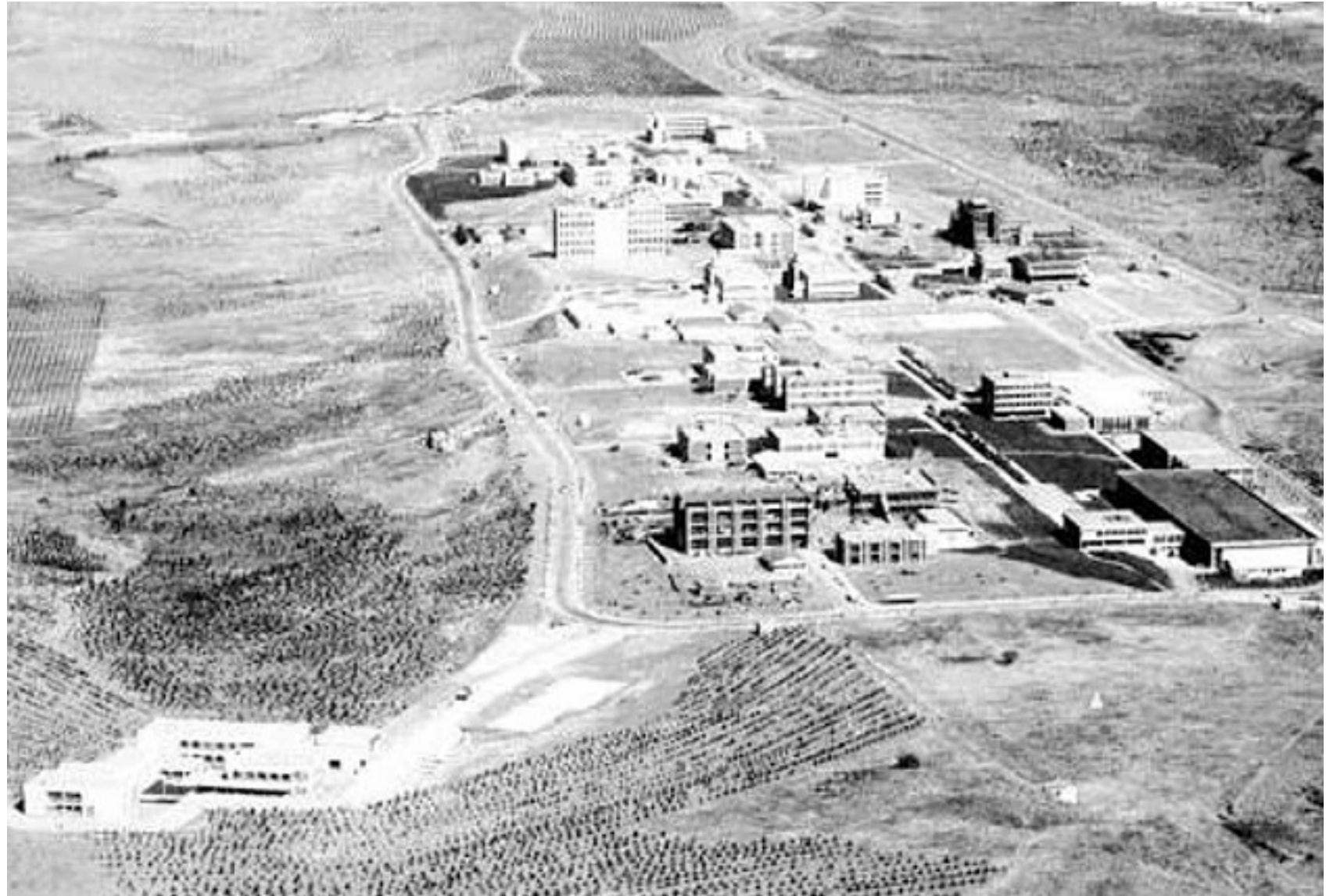
Main Campus Plan

The campus area is 4500 hectares (**45 km²**) with a forested area of 3043 hectares (**30 km²**)



Main Campus History (1960s)

The campus was built on barren land, steppe (bozkır), an Anatolian ecoregion characterized by grassland plains without any trees.



Main Campus History (Nowadays)

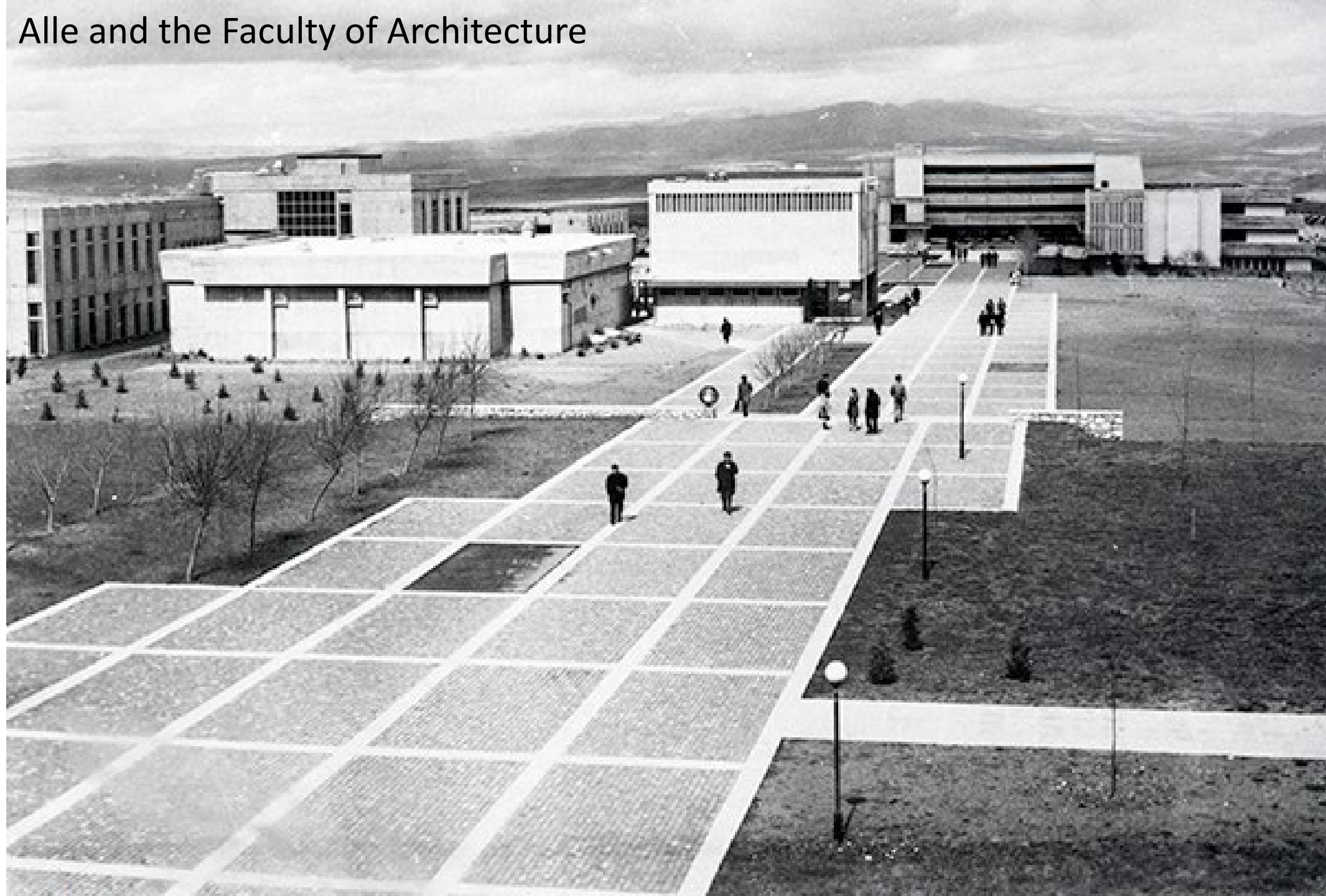


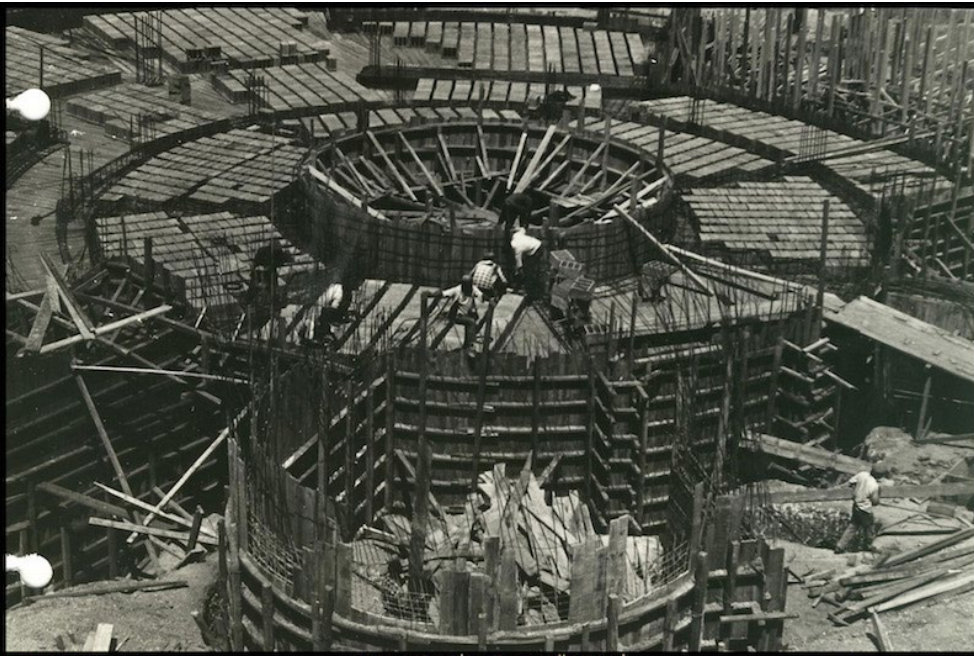
Campus Heritage: Early years...

- Middle East Technical University (METU) was **founded in 1956** with the name Middle East High Technology Institute.
- It moved to its current campus **in 1963**.
- A national competition with an international jury was held in 1961 to **select a plan for the campus**; the winning plan was that submitted by architects Altuğ Çinici and Behruz Çinici.
- The Architecture showcases the beauty, menace and raw power of "**Brutalist architecture**" (use of béton brut "raw concrete")
- Construction of the campus began on 12th May, 1962 with the **first building**, the Faculty of Architecture.



Alle and the Faculty of Architecture





ORTA DOĞU
TEKNİK ÜNİVERSİTESİ

FEN EDEBİYAT FAKÜLTESİ
AMFİ İNŞAATI

17 AĞUSTOS 1966



ORTA DOĞU
TEKNİK ÜNİVERSİTESİ

KÜTÜPHANE



1960'ların başında ODTÜ'de ağaçlandırma; ortada Kemal Kurdaş.

Fotoğraf: ODTÜ Arşivi





○ The reforestation program (headed by the first METU students and staff) of the campus was awarded with the **International Aga Khan Architecture Award** in 1995.



The Aga Khan Award for Architecture is given every 3 years to global projects that set new standards of excellence in architecture, planning practices, historic preservation and landscape architecture.



ORTA DOĞU TEKNİK ÜNİVERSİTESİ
MIDDLE EAST TECHNICAL UNIVERSITY

LAKE EYMİR

In 1956, within the **45 km²** granted, a lake (Lake Eymir), was also allocated to the Middle East Technical University for use.





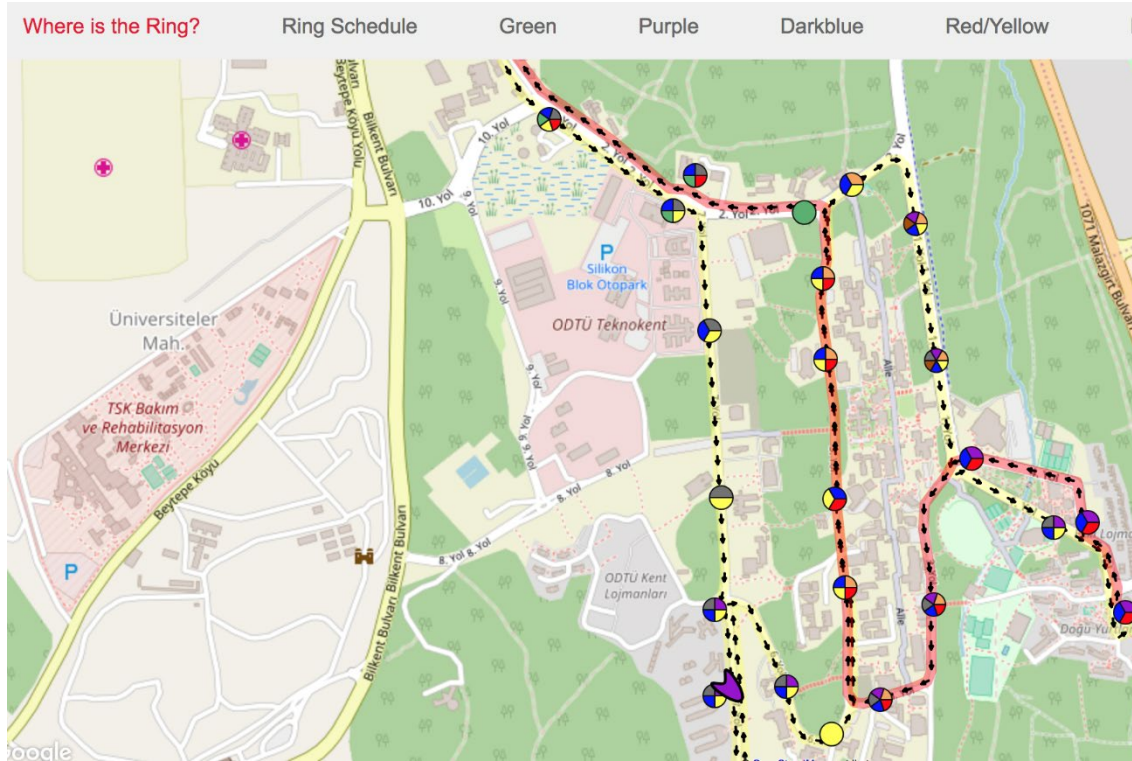
○ To date, the third rector of the university, KemaKurdaş's efforts have been continued. Now most of the once-barren land surrounding the campus as well as the lake is a pine forest.

○ The lake is predominantly used for **sports** teams, **recreation** and **research** (i.e. on site Lake Ecosystem, Limnology & Monitoring Research Labs)



Transportation Facilities

- METU Campus is walkable.
- As it 45 km squares, there is a bus transport system (with 45 buses) with a regular timetable for different directions across the campus area.
- An interactive application for real time monitoring of ring buses is also available for students and staff.





**Turkey's premier
state research
university**



**Established with an
international mandate
and an international
vision**



**English as the medium
of instruction at ALL
levels and degrees**

26.800+ Students

19.500+ Undergraduate
7.300+ Graduate



**Over 760 world-class full time faculty members
(68.5 % have Ph.D abroad)**

+ over 340 lecturers & 1,160 additional research staff



5 Faculties

Offering 41 undergraduate programs



5 Graduate Institutes

Offering 176 (105 Masters and 71 Ph.D)
graduate degrees (1/3 which are
interdisciplinary)



31 Interdisciplinary Research Centers

UNDERGRADUATE PROGRAMS

ENGINEERING (13)

Aerospace Engineering
Chemical Engineering
Civil Engineering
Computer Engineering
Electrical and Electronics Engineering
Environmental Engineering
Food Engineering
Geological Engineering
Industrial Engineering
Mechanical Engineering
Metallurgical and Materials Engineering
Mining Engineering
Petroleum and Natural Gas Engineering

ART & SCIENCES (10)

Biology, Chemistry, History, Mathematics,
Molecular Biology and Genetics, Philosophy,
Psychology, Physics, Sociology, Statistics

ARCHITECTURE (3)

- Architecture
- City and Regional Planning
- Industrial Design

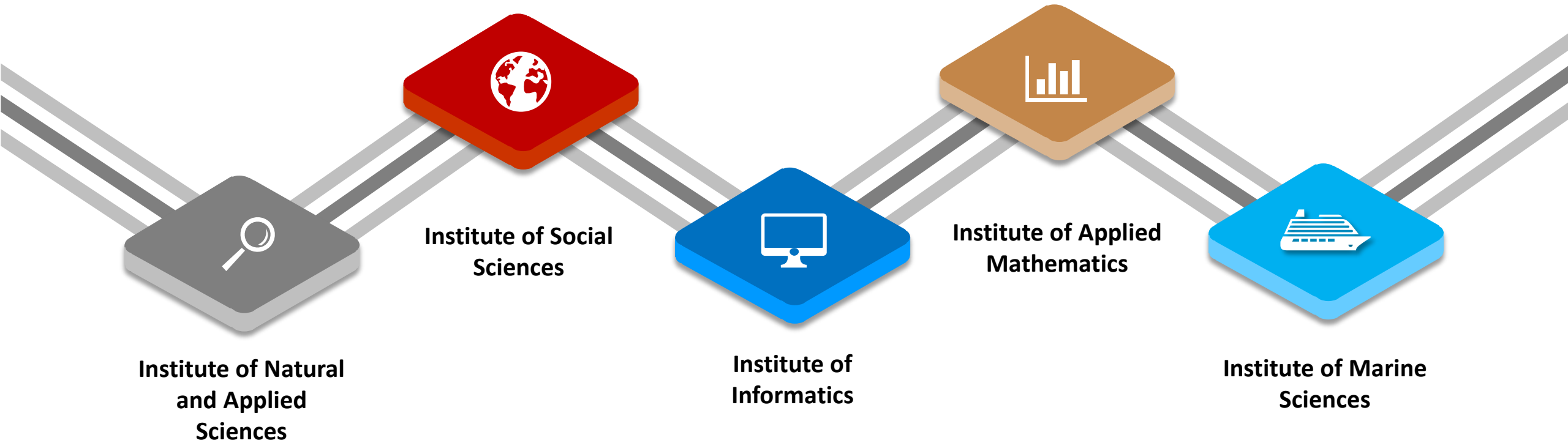
EDUCATION (9)

- Chemistry Education
- Computer Education & Instructional Tech.
- Early Childhood Education
- Elementary Mathematics Education
- Elementary Science Education
- English Language Teaching
- Mathematics Education
- Physics Education
- English Language Teaching/Liberal Studies (METU-SUNY New Paltz)

ECONOMICS & ADMINISTRATIVE SCIENCES (6)

- Business Administration
- Economics
- International Relations
- Political Science and Public Administration
- Business Administration (METU-SUNY Binghamton)
- Global and International Affairs (METU-SUNY Binghamton)







Programs	Master (1) With thesis, (2) Without thesis, (3) Evening program without thesis	PhD
Aerospace Engineering	M.S. (1)	Ph.D.
Archaeometry	M.S. (1)	Ph.D.
Architecture	M.Arch. (1)	Ph.D.
Biochemistry	M.S. (1)	Ph.D.
Biology	M.S. (1)	Ph.D.
Molecular Biology and Genetics	M.S. (1)	Ph.D.
Biomedical Engineering	M.S. (1)	Ph.D.
Biotechnology	M.S. (1)	Ph.D.
Building Science	M.S. (1)	Ph.D.
Cement Engineering	M.S. (1, 2)	
Chemical Engineering	M.S. (1)	Ph.D.
Chemistry	M.S. (1)	Ph.D.

Programs	Master (1) With thesis, (2) Without thesis, (3) Evening program without thesis	PhD
City and Regional Planning		Ph.D.
City Planning	M.C.P. (1)	
Regional Planning	M.C.P. (1)	
Urban Design	M.C.P. (1)	
Civil Engineering	M.S. (1)	Ph.D.
Computational Design And Fabrication Technologies In Architecture	M.S. (1)	
Computer Education and Instructional Technology	M.S. (1)	Ph.D.
Computer Engineering	M.S. (1,3)	Ph.D.
Conservation of Cultural Heritage	M.S. (1)	Ph.D.
Design for Interaction	M.S. (1)	
Earth System Science	M.S. (1,2)	Ph.D.
Earthquake Studies	M.S. (1)	
Electrical and Electronic Engineering	M.S. (1)	Ph.D.



Programs	Master (1) With thesis, (2) Without thesis, (3) Evening program without thesis	PhD
Engineering Management	M.S. (3)	
Engineering Sciences	M.S. (1)	Ph.D.
Environmental Engineering	M.S. (1)	Ph.D.
Environmental Management	M.S. (3)	
Food Engineering	M.S. (1)	Ph.D.
Geodetic and Geographic Information Technology	M.S. (1)	Ph.D.
Geological Engineering	M.S. (1)	Ph.D.
Hydrosystems Engineering	M.S. (3)	
Industrial Design	M.S. (1)	Ph.D.
Industrial Engineering	M.S. (1)	Ph.D.
Mathematics	M.S. (1,2)	Ph.D.
Mechanical Design and Manufacturing	M.S. (2)	
Mechanical Engineering	M.S. (1)	Ph.D.
Metallurgical and Materials Engineering	M.S. (1)	Ph.D.





Programs	Master (1) With thesis, (2) Without thesis, (3) Evening program without thesis	PhD
Micro and Nanotechnology	M.S. (1)	Ph.D.
Mining Engineering	M.S. (1)	Ph.D.
Neuroscience and Neurotechnology		Ph.D.
Occupational Health and Safety	M.S. (1,2)	
Operational Research	M.S. (1)	Ph.D.
Petroleum and Natural Gas Engineering	M.S. (1)	Ph.D.
Physics	M.S. (1)	Ph.D.
Polymer Science and Technology	M.S. (1)	Ph.D.
Restoration	M.S. (1)	Ph.D.
Secondary Science and Mathematics Education	M.S. (1,2)	Ph.D.
Software Engineering	M.S. (3)	
Statistics	M.S. (1)	Ph.D.
Structural Mechanics	M.S.(3)	



Programs	Master (1) With thesis, (2) Without thesis, (3) Evening program without thesis	PhD
Area Studies		Ph.D.
Asian Studies	M.S. (2)	
Business Administration	M.S. (1,2)	Ph.D.
Curriculum and Instruction	M.S. (1)	Ph.D.
Early Childhood Education	M.S. (1)	
Economics	M.S. (1,2)	Ph.D.
Educational Administration and Planning	M.S. (1)	Ph.D.
Elementary Education	M.S. (1)	
English Language Teaching	M.A. (1)	Ph.D.
English Literature	M.A. (1)	Ph.D.
Eurasian Studies	M.A. (1,2)	
European Integration	M.S. (3)	



Programs	Master (1) With thesis, (2) Without thesis, (3) Evening program without thesis	PhD
European Studies	M.S. (1,2)	
Executive MBA	M.S. (3)	
Family Psychology	M.S. (3)	
Gender and Women Studies	M.S. (1,2)	
German -Turkish Masters in Social Sciences	M.A. (2)	
Guidance and Psychological Counselling	M.S. (1)	Ph.D.
History	M.S. (1)	Ph.D.
History of Architecture	M.A. (1)	Ph.D.
Industrial and Organizational Psychology	M.S. (2)	
International Relations	M.S. (1,3)	Ph.D.
Latin and North American Studies	M.S. (1,2)	



Programs	Master (1) With thesis, (2) Without thesis, (3) Evening program without thesis	PhD
Media and Cultural Studies	M.S. (1,2,3)	
Middle East Studies	M.S. (1,2)	
Philosophy	M.A. (1)	Ph.D.
Physical Education and Sports	M.S. (1)	Ph.D.
Political Science and Public Administration	M.S. (1,2)	Ph.D.
Psychology (Clinical Psychology, Social Psychology, Traffic Psychology, Developmental Psychology, Work and Organizational Psychology)	M.S. (1)	Ph.D.
Science and Technology Policy Studies	M.S. (1,2)	Ph.D.
Settlement Archeology	M.S. (1)	Ph.D.
Social Anthropology	M.S. (1)	
Social Policy	M.S. (1,2)	
Sociology	M.S. (1, 2)	Ph.D.
Urban Policy Planning and Local Governments	M.S. (1,2)	Ph.D.





Programs	Master (1) With thesis, (2) Without thesis, (3) Evening program without thesis	PhD
Bioinformatics	M.S. (1)	
Cognitive Sciences	M.S. (1,2)	Ph.D
Cyber Security	M.S (1,2)	
Information Systems	M.S. (1,2)	Ph.D.
Medical Informatics	M.S. (1,2)	Ph.D.
Multimedia Informatics	M.S (1)	Ph.D
Software Management	M.S. (3)	





Programs	Master (1) With thesis, (2) Without thesis, (3) Evening program without thesis	PhD
Actuarial Sciences	M.S. (1,2)	
Cryptography	M.S. (1,2)	Ph.D.
Financial Mathematics	M.S. (1,2)	Ph.D.
Scientific Computing	M.S. (1,2)	Ph.D.



Programs	Master (1) With thesis, (2) Without thesis, (3) Evening program without thesis	PhD
Oceanography	M.S. (1)	Ph.D.
•Chemical Oceanography		
•Physical Oceanography		
•Ocean-Atmosphere Interactions		
•Biogeochemical and Ecosystem Modelling		
•Marine Biodiversity and Functioning		
•Geological Oceanography		
•Polar Oceanography		
Marine Biology and Fisheries	M.S. (1)	Ph.D.
Marine Geology and Geophysics	M.S. (1)	Ph.D.







Human Resources & Quality of Education



1

Over **760 world-class** faculty with Ph.D. degrees earned from most prominent universities (**68.5%**) from institutions abroad

2

Majority of METU students received from **the top 1-5%** of 2,000,000+ applicants taking the National University Entrance Examination every year

3

Highly **qualified** body of graduate students

4

Dedicated and well-qualified administrative staff

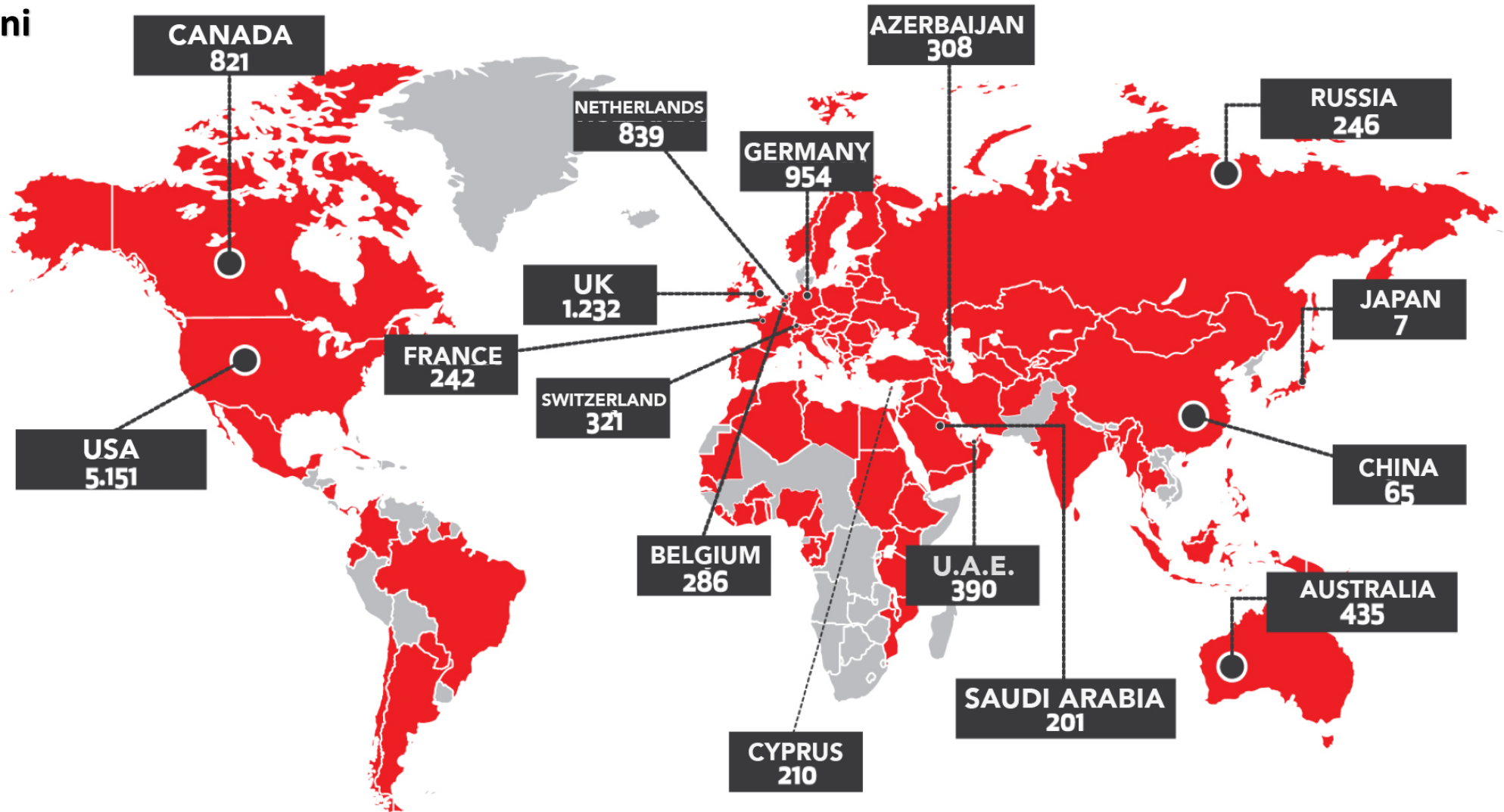
5

More than **145,000+** committed alumni organized under 40 (18 national and 22 international) alumni associations





Alumni





Alumni

**1 out of every 5 METU
graduates live abroad**





An International University



1

Over **2,200 international degree students** from **91 different countries** at Ankara and Cyprus campuses; in addition
500+ outgoing and **450+ incoming** students annually
140+ outgoing and **120+ incoming** staff annually

METU secured 2.6 million euros in the first period (2015-2017) of Erasmus+ ICM mobility programme on top of the 1 million euros awarded each year for Erasmus+ European mobility.

2

More than **3,000 international** applications each year, **13% acceptance rate**

3

All engineering programs are approved by the US-based Accreditation Board for Engineering and Technology (ABET)

4

Extensive experience **of collaboration with universities** abroad:
high degree of participation in Exchange and Erasmus+ programs with nearly 1,000 **agreements** with a wide range of international universities in various subjects worldwide

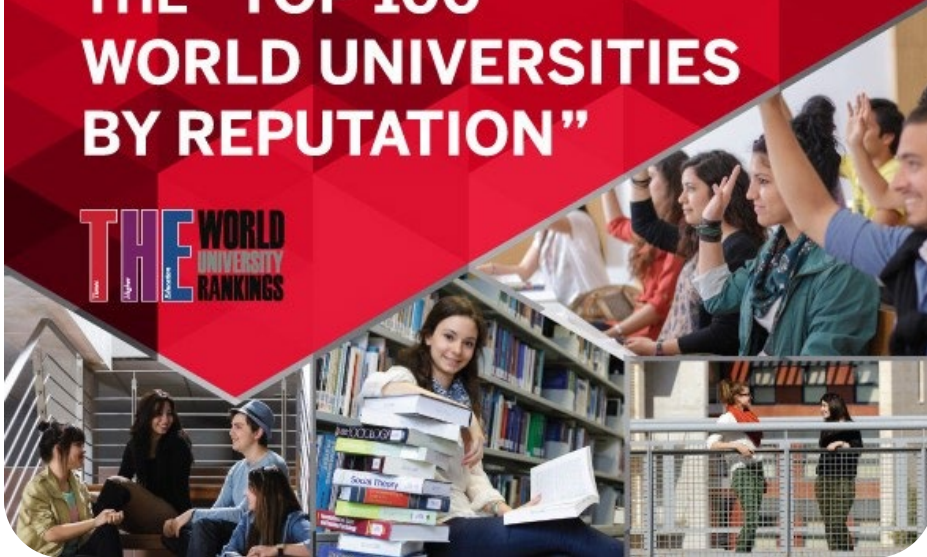




Reputable Internationally



**METU IS RANKED AMONG
THE “TOP 100
WORLD UNIVERSITIES
BY REPUTATION”**



5

Offering **23 joint-degree programs and protocols** in collaboration with universities abroad (4 undergraduate and 19 graduate degree programs with universities in US and Europe) as well as one joint PhD degree with Hacettepe University, one in progress with NTU (Taiwan of PRC)

6

METU rated among the **top world universities in several fields/rankings** (QS, Times Higher Education, Leiden, Webometrics, URAP, and others) over the years:

- **[the highest attained]** THE “*World University Rankings 2014-2015*” rank **85th** among top 400 universities & in THE 2021 by subject, Petroleum Engineering 11th, Mineral and Mining 36th, Faculty of Education was ranked 93th in the world.
- In **QS 2020**, METU was ranked as among top universities in the World in **24 subject areas** under engineering and technology, basic sciences, humanities and social sciences as well as architecture.
- In **US News Best Global Universities 2020**, METU was ranked **398th** in the world.

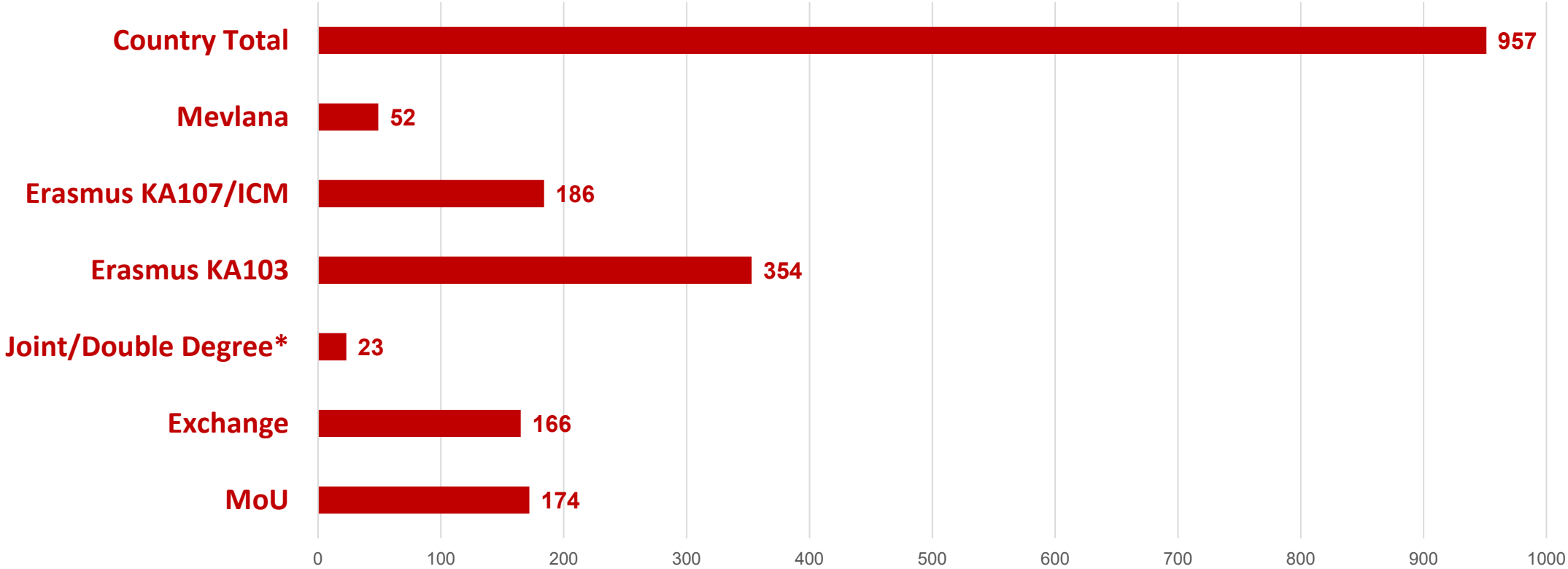
7

METU ranked as the **top university in Turkey** in engineering and technology, basic sciences, and social sciences (US News Best Global Universities, Shanghai, HEAECT, QS, URAP, and others)





957 agreements with 87 different countries



Some of METU Agreements with Global Partners

